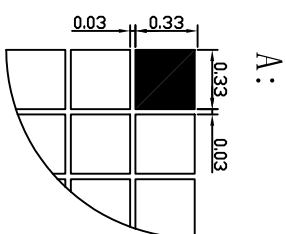
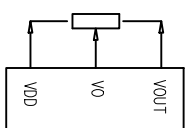
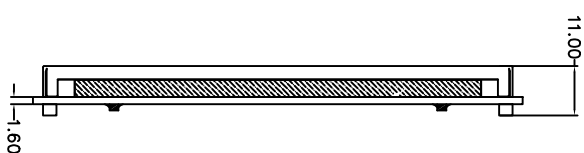
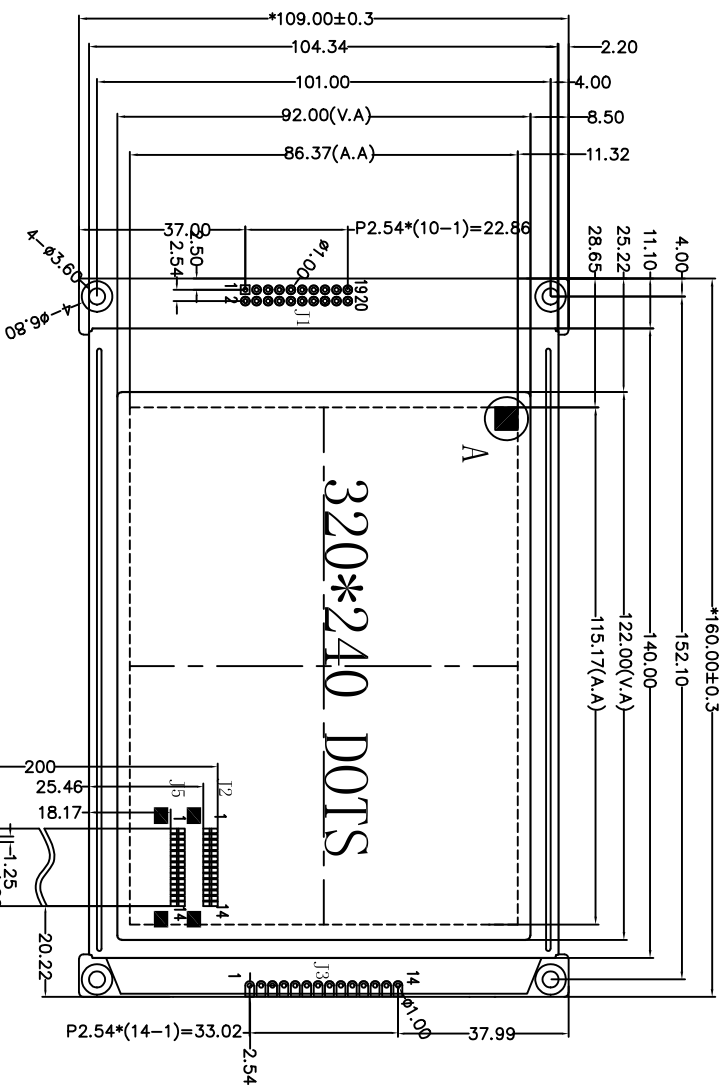


Customer approval :



SPECIFICATION:

- 1). Driving: Duty:1/240, Bias:1/17, VOUT:-21.5V, VO:-18.5V, VDD:5V
- 2). VIEWING DIRECTION: 6 O'CLOCK
- 3). Display mode: STN/Negative/Transmissive/Blue
- 4). Operating temp.: -20° C~+70° C
Storage temp.: -30° C~+80° C
- 5). Control IC: RA8835AP3N
- 6). BACKLIGHT Type: White 5V 160ma
- 7). DIMENSIONS WITH MARK "*" ARE IMPORTANT WITH MARK "()" ARE REFERENCED
- 8). All the raw materials are RoHS compliant

接口选择使用, FPC选择使用

J1	1	GND	2	VCC	3	VO	4	WR	5	RD	6	/CS	7	A0	8	/RES	9	DB0	10	DB1	11	DB2	12	DB3	13	DB4	14	DB5	15	DB6	16	DB7	17	NC	18	VOUT	19	BLA	20	BLK
J2	D0	D1	D2	D3	DISP	FLM	M	CP	VCC	GND	VOUT	VO	BLA																											
J3	D0	D1	D2	D3	DISP	FLM	M	CP	VCC	GND	VOUT	VO	BLA																											
J5	FLM	LP	CP	M	VO	VCC	GND	VOUT	D0	D1	D2	D3	DISP	NC																										

REV	REVISION RECORD	DATE
A0	First issue	03/15



深圳市三元晶科技有限公司
ShenZhen TCC LCD Hi-Tech Co., Ltd.

MODEL NO.	SYM320240B8V41	GENERAL TOL:	± 0.3
APPROVED BY		PAGE	1 OF 3
CHECKED BY		UNIT:	mm
DRAWING BY	LAN	PROJECTION	第三角